

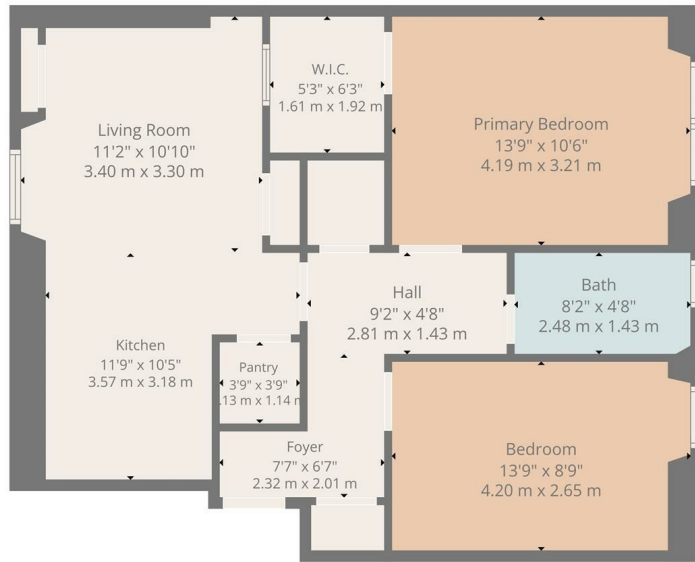


OFFERS OVER

£265,000

Roseburn Place

Edinburgh, EH12 5NP



TOTAL: 719 sq. ft, 67 m²
 Ground floor: 719 sq. ft, 67 m²
 EXCLUDED AREAS: WALLS: 56 sq. ft, 5 m²

Floor Plan Created By Cubicasa App. Measurements Deemed Highly Reliable But Not Guaranteed.



Energy Efficiency Rating		Current	Potential
Very energy efficient - lower running costs			
(92 plus)	A		
(81-91)	B		
(69-80)	C		
(55-68)	D		
(39-54)	E		
(21-38)	F		
(1-20)	G		
Not energy efficient - higher running costs			
Scotland		74	78
		EU Directive 2002/91/EC	

Agents Note: Whilst every care has been taken to prepare these particulars, they are for guidance purposes only. All measurements are approximate and are for general guidance purposes only and whilst every care has been taken to ensure their accuracy, they should not be relied upon and potential buyers/tenants are advised to recheck the measurements



OFFICE ADDRESS
 8 Deer Park Avenue
 Livingston
 EH48 8AF

OFFICE DETAILS
 01506 532422
 enquiries@hemmingshomes.co.uk
 hemmingshomes.co.uk